

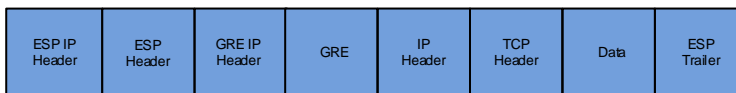
## GRE - GENERAL ROUTING ENCAPSULATION

Créer par CISCO pour transporter des protocoles au travers des réseaux IP. GRE ajoute un nouveau header GRE aux paquets, similaire à IPSec.

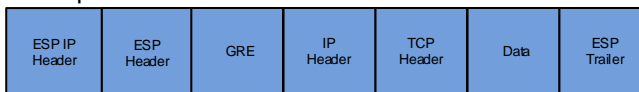
- Similaire à un tunnel IPSec
- Stateless, aucun mécanismes de contrôle du flux
- Multi protocoles
- Permet aux protocoles de routages de passer
- Peu de mécanismes de sécurité

## GRE over IPSec packet format

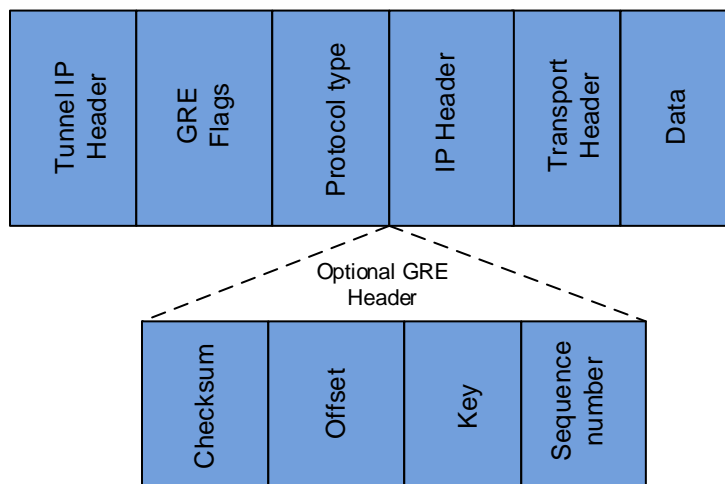
## Tunnel Mode



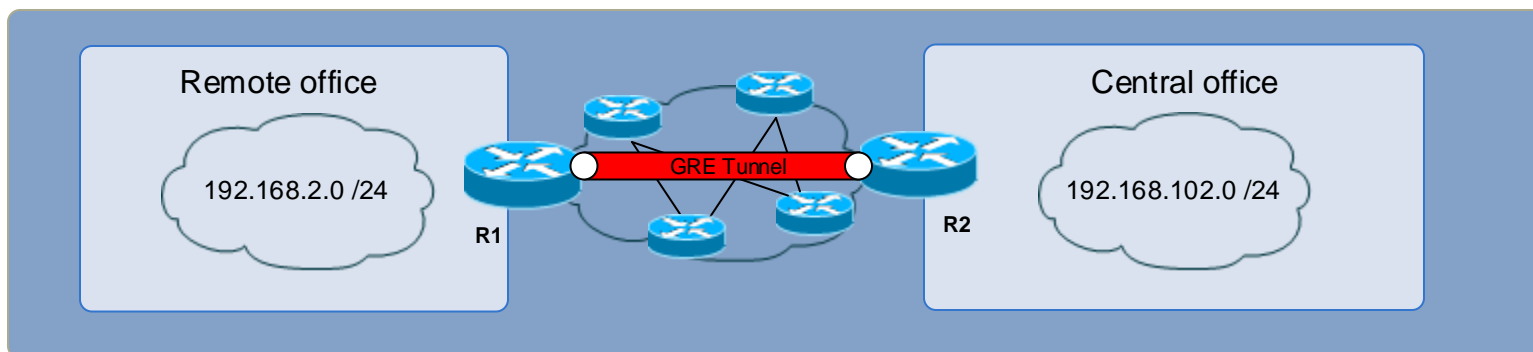
## Transport Mode



## GRE Packet format



## GRE Configuration



```
R1(config)#interface serial 2/1
R1(config-if)#ip address 172.16.1.2 255.255.255.0
R1(config)#interface tunnel 0
R1(config-if)#ip address 192.168.200.1 255.255.255.0
R1(config-if)#tunnel source serial 2/1
R1(config-if)#tunnel destination 10.1.3.2
R1(config-if)#tunnel mode gre ip
```

```
R2(config)#interface serial 3/2
R2(config-if)#ip address 10.1.3.2 255.255.255.0
R2(config)#interface tunnel 2
R2(config-if)#ip address 192.168.200.2 255.255.255.0
R2(config-if)#tunnel source serial 3/2
R2(config-if)#tunnel destination 172.16.1.2
R2(config-if)#tunnel mode gre ip
```